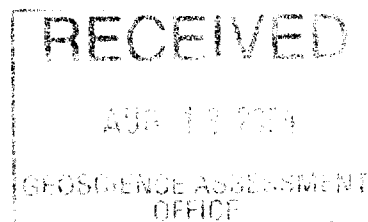


**NORTHERN EXPLORERS LTD
ASSESSMENT WORK REPORT
- ON -
MINING CLAIM # S 3004077
CLAIM MAP G:2900
AFTON TOWNSHIP, NTS 41 - I/16
Sudbury Mining Division**

Preliminary mapping / prospecting; sampling; physical/chemical testing

**Prepared by:
Ed A. Rose, C.P.Geol.**

August 11th, 2004



41I16NW2018 2.28281

AFTON

TABLE OF CONTENTS

	Page
INTRODUCTION.....	1
LOCATION AND ACCESS.....	1
TOPOGRAPHY / VEGETATION.....	1
PREVIOUS WORK.....	1
REGIONAL GEOLOGY.....	1
PROPERTY GEOLOGY.....	1-2
WORK CARRIED OUT.....	2
RAW PRODUCT DESCRIPTION.....	2
ASSAY ANALYSIS.....	3 (see Appdx. 1)
CRUSHING /SCREENING OF SAMPLES.....	3
STATEMENT OF COST AND EXPENDITURES	4
CONCLUSIONS AND RECOMMENDATIONS	4

LIST OF FIGURES

LOCATION MAP	5
GEOLOGY & SAMPLE MAP	6
APPENDIX #1 ASSAY ANALYSIS	7

INTRODUCTION

A preliminary work program designed to include geological mapping, prospecting, sampling, physical and chemical analyses was carried out on mining claim S-300477 Afton township. This claim is registered in the name of Northern Explorers Ltd of 3142 East View, Saskatoon, Saskatchewan, S7J 3J4.

Project work was carried out in stages between Sept. 10/02 - July/20/03.

LOCATION AND ACCESS

Located in Afton township, Claim #300407 is between coordinates 545530E - 546330E and 519848ON - 519888ON (NAD27UTM17 NTS 41 - I/16).

The claim is accessed via highway 17E from Sudbury to Verner (63km) ; then right on highway 539 to field (19km). Continue west to River Valley (15km), then north on part paved part gravel road to a bridge(37km). Turn left (gravel road) and travel to a fork(21km), then right for 1 km and right to the claim (2.5km)

TOPOGRAPHY / VEGETATION

The topographic feature of the area shows alternating areas of outcrop and drift cover. Sills/dikes of Nipissing diabase are responsible for a series of high, rocky and rugged ridges which separate structurally weak areas and low ground.

Most of the vegetation is second growth spruce, birch, poplar and jackpine, with alders tamaracks and cedars in swampy areas. Timber/pulpwood harvesting carried out in the area for many year is responsible for the second growth.

PREVIOUS WORK

Except for geological mapping carried out in 1948 by "Dominion Gulf" in an attempt to locate high anomaly Fe areas no other record of work was found.

REGIONAL GEOLOGY

The area is of gently doming within the superior province of the Canadian shield. Erosion of the overlying huronian supergroup (Cobalt plate) has exposed early pre cambrian metavolcanics and metasediments. The isoclinally folded early precambrian trend east-west and is steeply dipping.

As the area is part of the Cobalt structural plain faulting is the most important structural feature while folding is slight within the huronian sediments.

PROPERTY GEOLOGY

Detail geological mapping of the area was not carried out. ^{only} The only mapping and prospecting carried out was in the immediate area of quartz veins which are the subject of interest.

The property is within an area of early metavolcanics, metasediments and Nipissing diabase.

The metavolcanics are of felsic to mafic-intermediate pyroclastic and porphyritic flows. While the felsic-intermediate volcanics occur as flow and pyroclastics. The mafic metavolcanics are predominantly massive flows with some intercalated pillow lavas. In many cases the pyroclastics show tectonic deformation resulting in schists. The metasediments exhibit a composition of granitic material and a fine matrix of dark material.

Diabase occur as dikes is fine textured at the contact with sediments and metavolcanics. It has a gabbroic composition, lath shaped plagioclase crystals.

Located in the upper third of the west part of the claim is a flat lying E-W quartz vein of some 2100 ft x up to 220 feet. More than one age of growth is evidenced by the healing of strained and fracture coatings within the regenerated crystal.

It appears as though the quartz was deposited towards the end of igneous activity and a period of minor folding. Deformation of competent rock shattered and left the opening (shear) which the quartz now occupy. Milky quartz was deposited first at fairly high temperature as indicated by the presence of gaseous inclusions. As the concentration of liquid decreased and the temperature lowered small crystals were formed and much clearer quartz was deposited.

In isolated areas in the vicinity of the quartz there are patches of chlorite. This suggests that during emplacement (of the quartz) temperatures were high enough and therefore the mafic silicates of the enclosing rocks were converted to chlorite. The quartz is white (especially at the base) but exhibits a blue tinge in sections. In other isolated sections inclusions of shared diabase is found within the quartz while patches of Fe staining is sperodic.

WORK CARRIED OUT

Between September 10/02 - July/20/03 work on the project included the layout of A 2100ft base line and cross lines on 100ft centers and 100ft on either side. These lines were layed out by pace - chain and compass and hardly any trees were cut. Prospecting and mapping of the quartz body and sampling were carried out. Along each line approximately 10 lbs of chip sample was collected for a total of 21 samples (210 lbs).

The sample materials were then transported to Sudbury for preparation and testing. The 210 lbs sample was made into a well mixed composite and examined. The sample was not contaminated.

RAW PRODUCT DESCRIPTION

<u>Mineral Composition</u>	<u>Modal Percentage</u>
Quartz	90
Opaque inclusions	10

Anhedral, massive grains greater than 10 mn minute inclusions of opaque material; sharp grain boundaries, opaque inclusions are anhedral less than 0.1 mm, scattered and locally concentrated within fractures. Quartz grain showed no sign of strain (ie. condolatory extinction), but exhibit

fracturing with no preferred orientation. The fractures are relatively narrow features cutting across grain boundaries. The opaque inclusions are stress-activated transformations involving localised changes of atomic arrangement within the quartz grain. The dislocation results from the stress that initiated the fracturing.

The raw product is massive (amorphous) with about 20% by weight, pieces substantially water clear, while most of the material exhibits white milky colour due to the inclusion of gases and liquids.

ASSAY ANALYSIS

Four samples from the project area were submitted to the MNM Geo labs by M. Gerow for analysis. The following results were obtained.

SEE APPENDIX #1 B #7

CRUSHING / SCREENING OF SAMPLE

The sample was delivered to a small private crusher in Hanmer Ontario and the following procedures were carried out.

1. Clean jaw crusher with wire brush.
2. Air-blow dust off inside and on the top of the crusher for sample preparation.
3. Run small sample through crusher to clean the jaws and remove any contaminated materials, then discard the sample.
4. Set the crusher at #1 setting and crush all samples at this setting.
5. Feed and crush small pieces of sample to prevent crusher from jamming.
6. Put the collected product in a sealed plastic bag to avoid any contamination.
7. Label the plastic sample bag according to the field code given.
8. Repeat the above steps for the next sample.

Further work performed consist of crushing 2 separate 50 lbs sample and screening these into 3/8", 1/4" and -1/16" sizes. (Remainder kept as umpire sample)

Sample #1(50 lbs)

SIZE	WT(lbs recovered)	% of TOTAL
3/8	17.49	34.98
1/4	12.84	25.68
1/8	9.97	19.94
-1/16	7.66	15.32
Total	48.96	95.92

Sample #2 (50 lbs)

SIZE	WT(lbs recovered)	%of TOTAL
3/8	16.95	33.90
1/4	12.48	24.96
1/8	9.82	19.64
-1/16	8.95	17.90
Total	48.20	96.40

STATEMENT OF COSTS AND EXPENDITURES

DATE: September 10/02 - Ed Rose and Isaac Idika - Prospecting grid, layout and sampling.

8 a.m. - 10 p.m = 14 hours x \$85 = \$1190

September 11/02 - 8 a.m. - 9 p.m. = 13 hours x %85 = \$1105

Travel total - Sudbury - site - return 640 km x \$0.40 = \$256

July 16/03 - Ed Rose/Mike Dagostino/Gary Ross - Sample prep crushing and screening

9 a.m. - 8 p.m. = 11 hours x \$105 = \$1155

August 12/04 - Report compilation/preparation = 4 hours x 60 = \$240

TOTAL = \$ 3,945.

CONCLUSION AND RECOMMENDATION

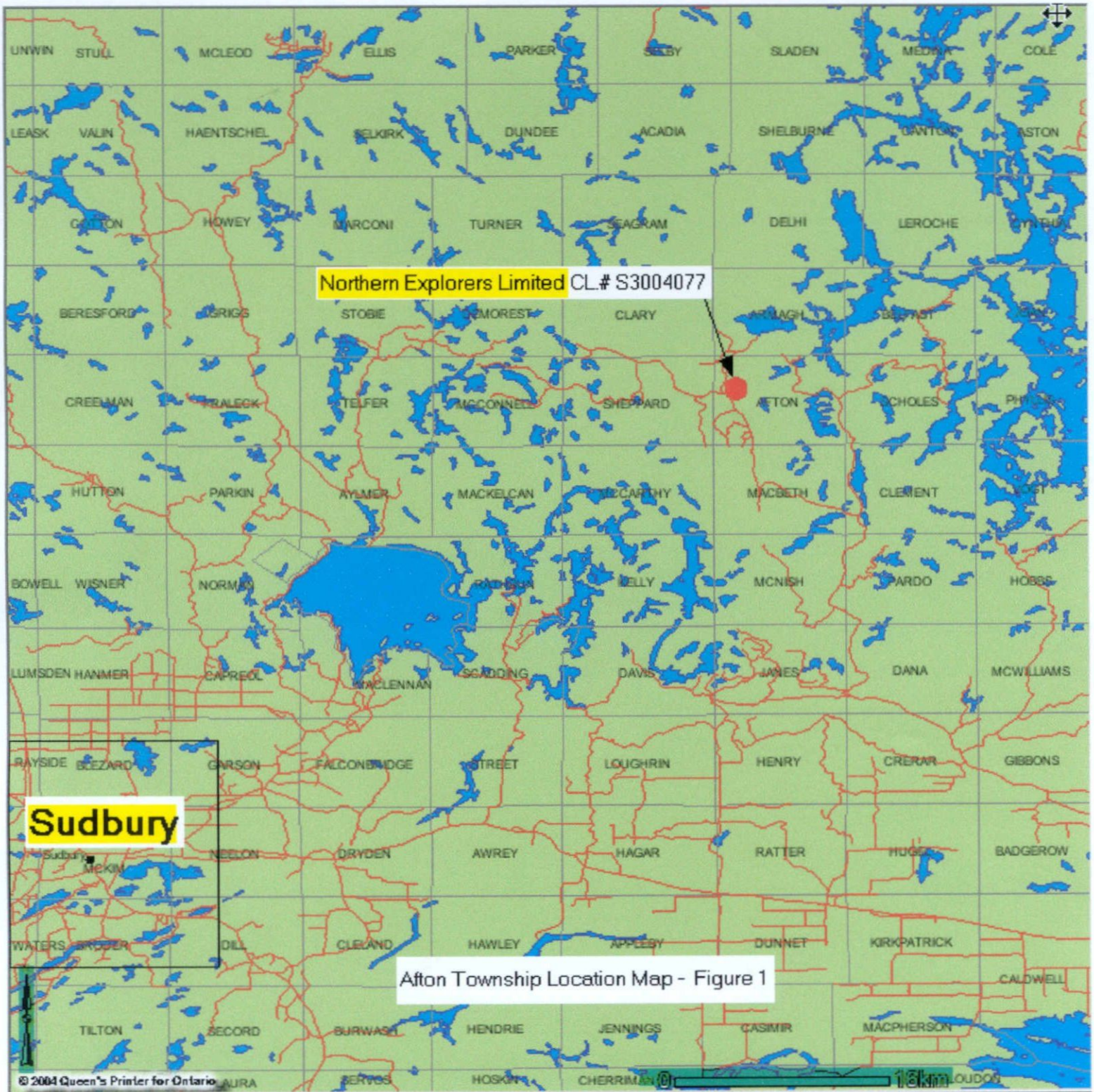
The ore body(deposit) appeared to contain enough high purity quartz material to satisfy markets to include the chemical industry and polyconcrete manufacturer. One sample each from the crush products was delivered to a Hanmer Ontario company (NCL) polyconcrete manufacture. This product will be formulated with NCL's resin and other raw filler products for the production of electrolytic cells and for environmental concrete products. It is hoped that by using quartz the psi value of above 10,000 will be obtained and all other structure and mechanical values will be acceptable for products manufacturing.

Once results are obtained from NCL further project work should be carried out in order to position the product for industry.

Respectfully submitted,



Ed A. Rose, C.P.Geol.





**GEO SCIENCE LABORATORIES
CERTIFICATE OF ANALYSIS**



CLIENT : Gerow
Geo Labs JOB # : 03-0059
DATE : 05/23/2003
METHOD CODE : xwf-101

Client ID	SiO2	TiO2	Al2O3	Fe2O3	MnO	MgO	CaO	Na2O	K2O	P2O5	LOI	TOTAL
Units	wt%	wt%	wt%	wt%	wt%	wt%	wt%	wt%	wt%	wt%	wt%	wt%
Detection Limit	0.01	0.01	0.01	0.01	0.01	0.01	0.01	0.01	0.01	0.01	0.05	n/a
MG03-01	98.73	N.D.	0.59	0.05	N.D.	0.01	0.06	N.D.	0.04	N.D.	0.34	99.80
MG03-02	99.60	N.D.	0.45	N.D.	N.D.	N.D.	0.07	N.D.	0.04	N.D.	0.43	100.60
MG03-03	99.20	N.D.	0.25	0.26	0.02	0.01	0.02	N.D.	0.01	N.D.	0.30	100.03
MG03-04	99.60	N.D.	0.43	N.D.	N.D.	N.D.	0.02	N.D.	0.02	N.D.	0.25	100.30

NORTHERN EXPLORES LTD
CLAIM #300477
AFTON TWP.
Aug 11/04

LEGEND


Precambrian
Magmatic INTRUSIVE

1 Diabase / Gabbro

2 Quartz

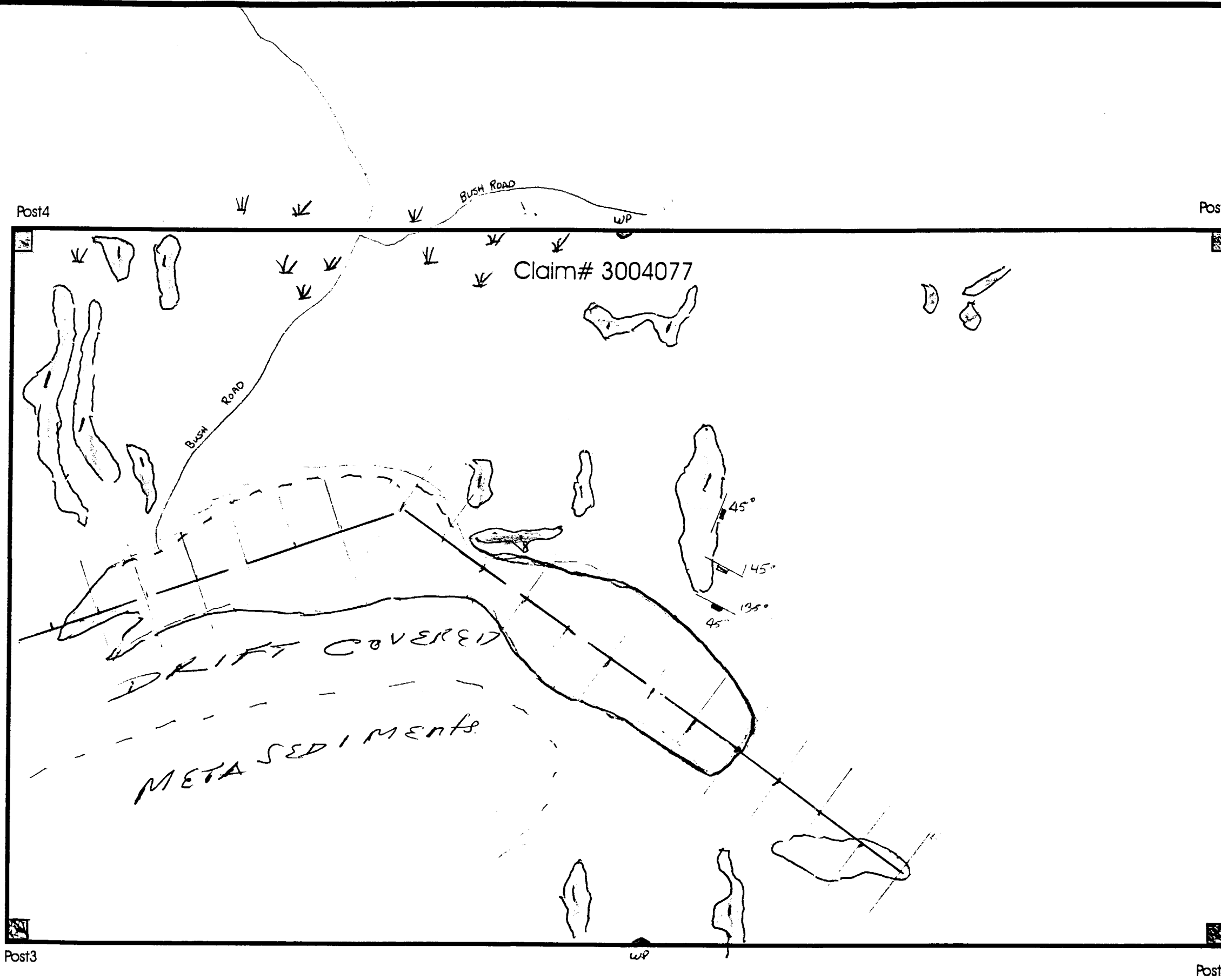
Symbols

 Picket Line

 Jointing
(Incline, Vertical)

 Creek

 Swamp



GEOLOGY SAMPLING MAP

NORTHERN EXPLORERS LTD

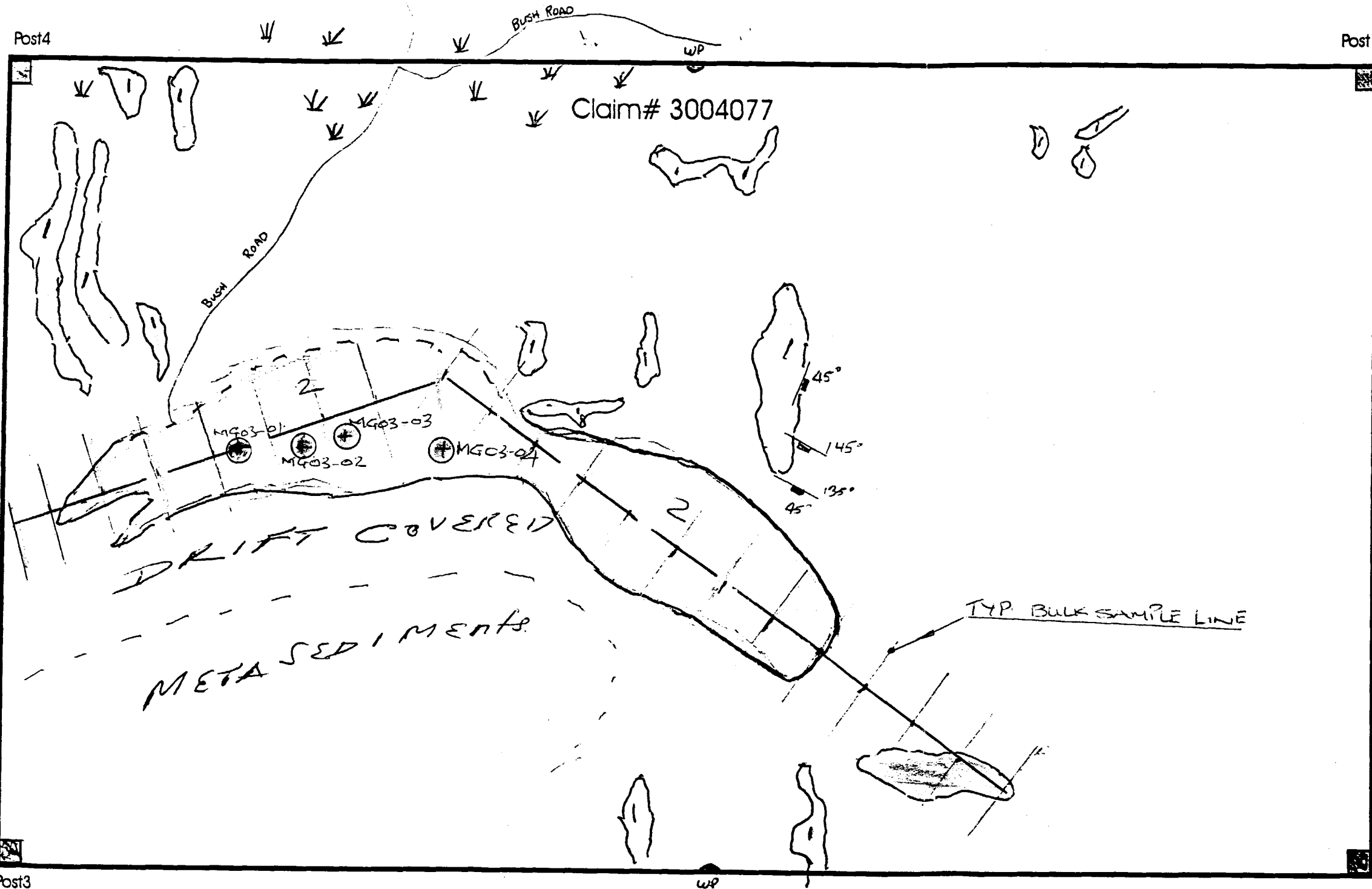
CLAIM # 3004077
AFTON TOWNSHIP NTS41 | 16

DETAIL OF CLAIM

UTM ZONE 17, NAD 83 REFERENCES

Scale 1": 200" | 11/8/2004 | FIG. 2

2 . 2828 1



LEGEND

Precambrian
MAFIC INTRUSIVE

1 Diabase / Gabbro

2 Quartz

Symbols

Picket Line

Jointing
(Incline, Vertical)

Creek

Swamp

MG03-01 SAMPLE LOCATION

NORTHERN EXPLORERS LTD

CLAIM # 3004077

AFTON TOWNSHIP NTS 41 | 16

DETAIL OF CLAIM

UTM ZONE 17, NAD 83 REFERENCES

Scale 1": 200" 11/8/2004 FIG. 2

GEOLOGY SAMPLING MAP

RECEIVED

NOV 22 2004

GEOSCIENCE ASSESSMENT
OFFICE

Rev 11/22/04 EA

Date: 2004-NOV-25

GEOSCIENCE ASSESSMENT OFFICE
933 RAMSEY LAKE ROAD, 6th FLOOR
SUDBURY, ONTARIO
P3E 6B5

NORTHERN EXPLORERS LTD.
3142 EASTVIEW
SASKATOON, SASKATCHEWAN
S7J 3J4 CANADA

Tel: (888) 415-9845
Fax: (877) 670-1555

Submission Number: 2.28281
Transaction Number(s): W0470.01288

Dear Sir or Madam

Subject: Approval of Assessment Work

We have approved your Assessment Work Submission with the above noted Transaction Number(s). The attached Work Report Summary indicates the results of the approval.

At the discretion of the Ministry, the assessment work performed on the mining lands noted in this work report may be subject to inspection and/or investigation at any time.

Thank you for your prompt response to the 45 Day Notice dated October 28, 2004. The deficiencies outlined in the Notice have been corrected. Accordingly, assessment work credit has been approved as outlined on the Declaration of Assessment Work Form that accompanied this submission.

If you have any question regarding this correspondence, please contact STEVEN BENETEAU by email at steve.beneteau@ndm.gov.on.ca or by phone at (705) 670-5855.

Yours Sincerely,



Ron C. Gashinski
Senior Manager, Mining Lands Section

Cc: Resident Geologist
Northern Explorers Ltd.
(Claim Holder)

Assessment File Library
Northern Explorers Ltd.
(Assessment Office)

Date / Time of Issue: Thu Dec 02 10:53:12 EST 2004

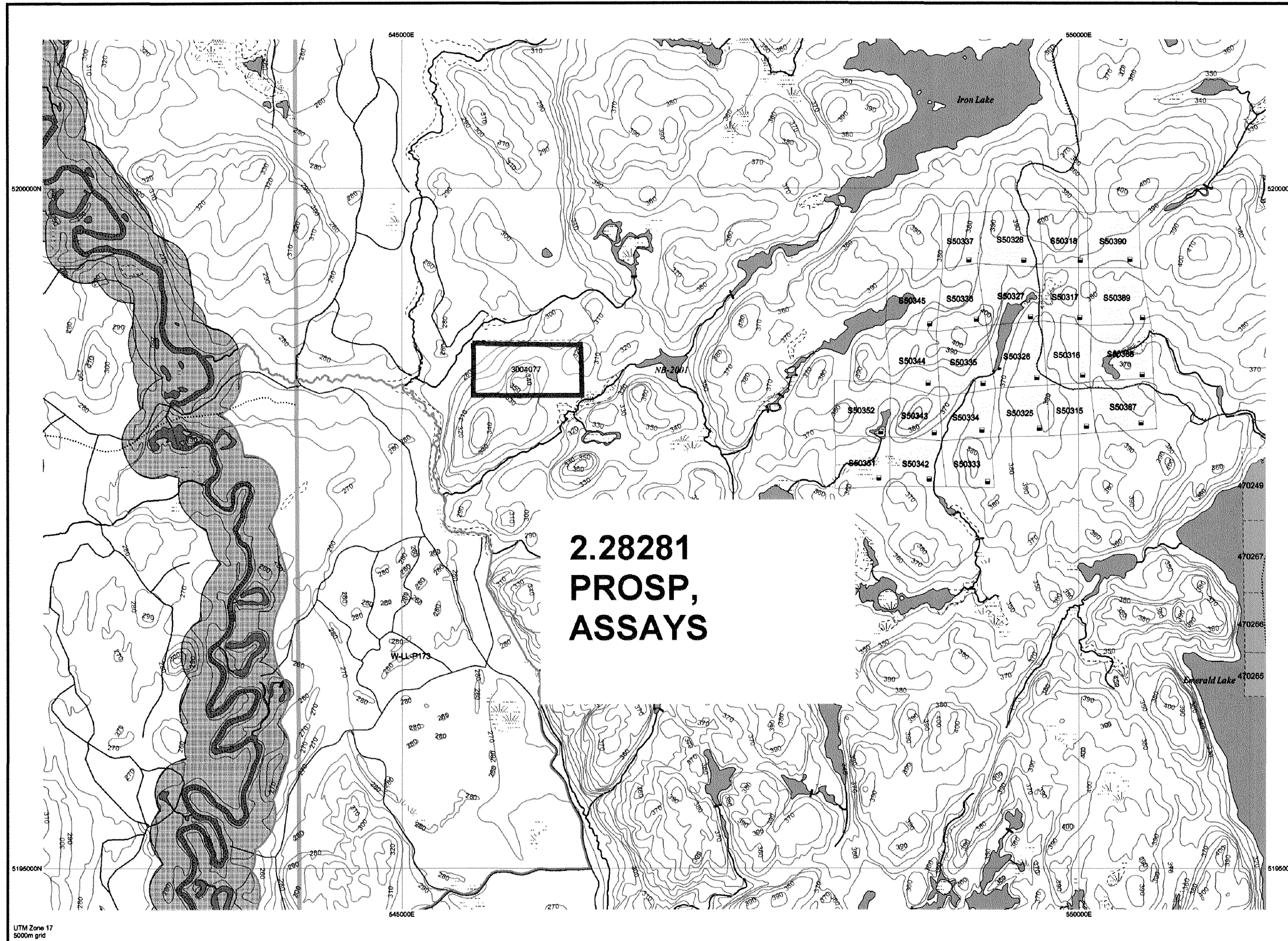
TOWNSHIP / AREA
AFTON

PLAN
G-2900

ADMINISTRATIVE DISTRICTS / DIVISIONS

Mining Division
Land Titles/Registry Division
Ministry of Natural Resources District

Sudbury
SUDBURY
NORTH BAY



**2.28281
PROSP,
ASSAYS**

TOPOGRAPHIC

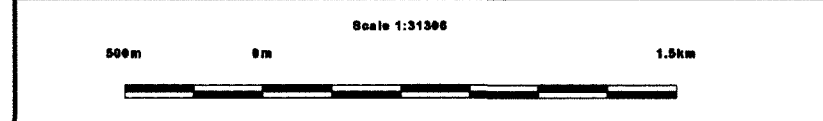
- Administrative Boundaries
- Township
- Concession, Lot
- Provincial Park
- Indian Reserve
- Cliff, Pit & Pile
- Contour
- Mine Shafts
- Mine Headframe
- Railway
- Road
- Trail
- Natural Gas Pipeline
- Utilities
- Tower

Land Tenure

- Freehold Patent**
 - Surface And Mining Rights
 - Surface Rights Only
 - Mining Rights Only
- Leasehold Patent**
 - Surface And Mining Rights
 - Surface Rights Only
 - Mining Rights Only
- Licence of Occupation**
 - Uses Not Specified
 - Surface And Mining Rights
 - Surface Rights Only
 - Mining Rights Only
 - Land Use Permit
 - Order in Council (Not open for staking)
 - Water Power Lease Agreement

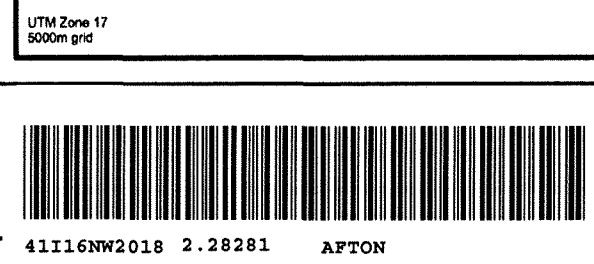
MINING CLAIM	FILED ONLY MINING CLAIMS
1234567	1234567
1234	

- LAND TENURE WITHDRAWALS**
- Mining Acts Withdrawal Types
 - Wsm Surface And Mining Rights Withdrawn
 - Ws Surface Rights Only Withdrawn
 - Wm Mining Rights Only Withdrawn
 - Order in Council Withdrawal Types
 - Wsm Surface And Mining Rights Withdrawn
 - W^s Surface Rights Only Withdrawn
 - W^m Mining Rights Only Withdrawn
 - No
- IMPORTANT NOTICES**



LAND TENURE WITHDRAWAL DESCRIPTIONS

Identifier	Type	Date	Description
W-LL-P173	Wsm	Jun 11, 2004	W-LL-P173 OMT M&S withdrawal S.35 Mining Act RSO 1999, 11 Boundary generally depicts area withdrawn Click to view actual area



Ministry of Northern Development and Mines for additional title determination purposes as the information on this map may also be obtained through the Ministry of Northern Development and Mines.

General Information and Limitations
 Contact Information:
 Provincial Mining Recorders' Office
 Willet Green Miller Centre 933 Ramsey Lake Road
 Sudbury ON P3E 6B5
 Home Page: www.mndm.gov.on.ca/MNDM/MINES/LANDS/mlsmnpgc.htm

Toll Free
 Tel: 1 (888) 415-9845 ext 5777
 Fax: 1 (877) 870-1444

Map Datum: NAD 83
 Projection: UTM (6 degree)
 Topographic Data Source: Land Information Ontario
 Mining Land Tenure Source: Provincial Mining Recorders' Office

This map may not show unregistered land tenure and interests in land including certain patents, leases, easements, right of ways, flooding rights, licences, or other forms of disposition of rights and interest from the Crown. Also certain land tenure and land uses that restrict or prohibit free entry to stake mining claims may not be illustrated.