


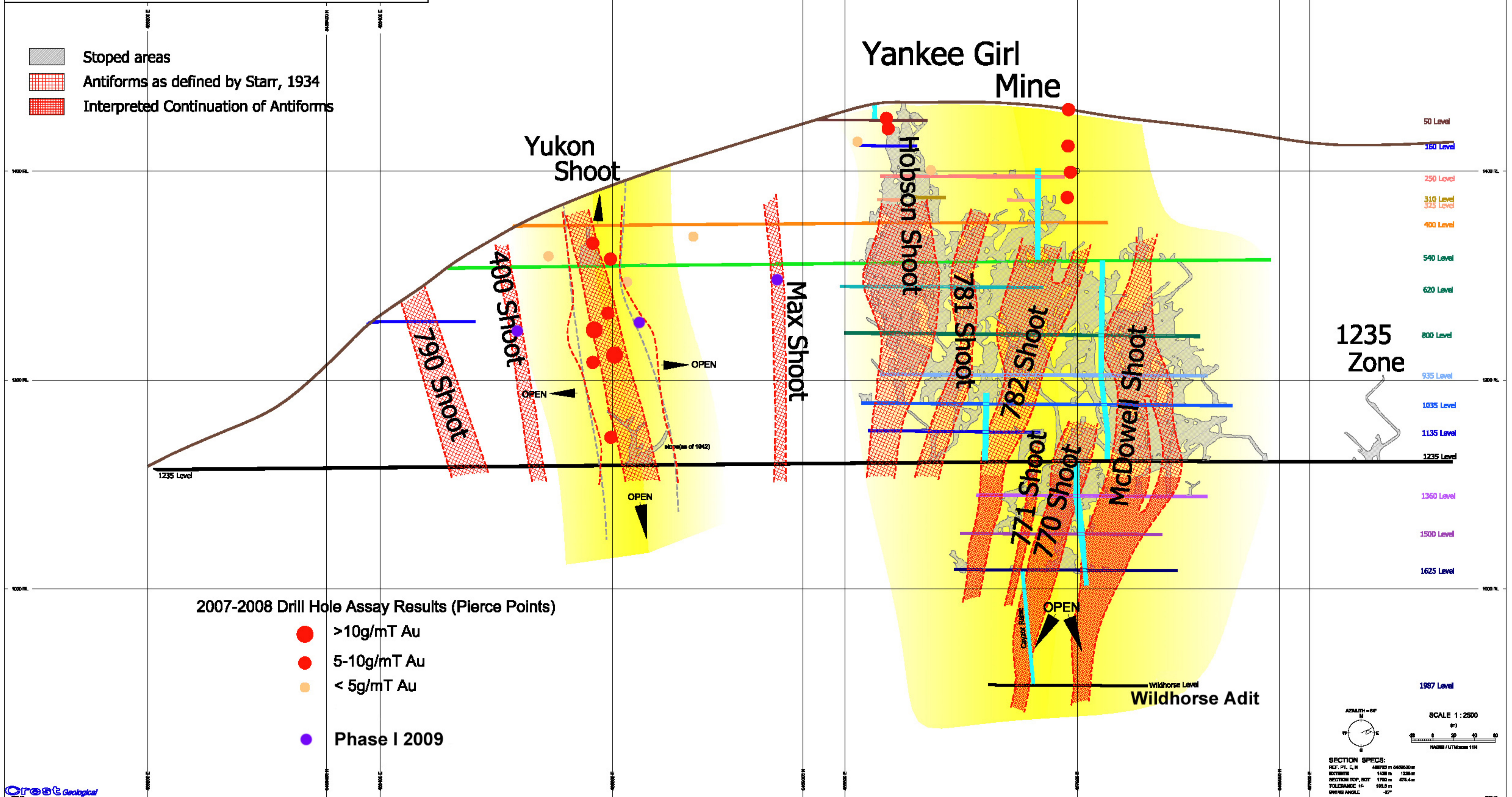






Yankee Girl Mine Inclined Section

Section Looking Northwest

-  Stopped areas
-  Antiforms as defined by Starr, 1934
-  Interpreted Continuation of Antiforms



2007-2008 Drill Hole Assay Results (Pierce Points)

-  >10g/mT Au
-  5-10g/mT Au
-  < 5g/mT Au
-  Phase I 2009

SECTION SPECS:
 NET. FT. S.M. 488733 m 0495000 m
 ELEVATIONS 1438 m 4286 m
 SECTION TOP, BCT 1700 m 426.4 m
 TOLERANCE +/- 100.0 m
 SWING ANGLE -27°

SCALE 1 : 2500
 (m)
 0 20 40 60
 METERS / FEET (x1.1)

AZIMUTH = 0°